

## Improved Landfill Management

### Dealing with the Public

Centre for Environmental Training 

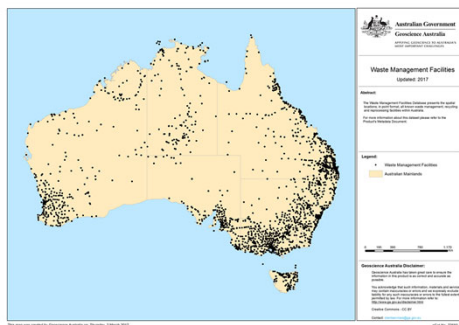
## Public interaction

Wide range of public interaction relating to landfills:

- Public information; locations, opening times, signage, acceptable wastes etc.
- Educational information; waste reduction, recycling
- Public visiting the landfill; access, safety, human interaction, tip shops, sales
- Compliance, complaints, objectors, illegal activity

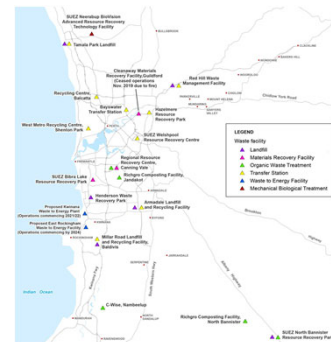
Centre for Environmental Training 

## Waste Facilities in WA



Centre for Environmental Training 

## Waste facilities around Perth



Centre for Environmental Training 

## Clear signage – Swan Hill, VIC



Centre for Environmental Training 

## Clear signage



Centre for Environmental Training 

### Clear signage - but small lettering



Centre for Environmental Training cet

### Clear signage – important messaging



Centre for Environmental Training cet

### New Dump sign

- A good look, or a bit retro?



Centre for Environmental Training cet

### Multi-lingual signage

- Hume, VIC Resource Recovery Centre

Centri di raccolta prodotti chimici e recupero risorse  
 Ανάκτηση Πόρων και Κέντρα Συλλογής Χημικών  
 Kaynak Geri Kazanımı ve Kimyasal Madde Toplama Merkezleri  
 Trạm Thu Nhật Vật Liệu và Thu Gom Hóa Chất  
 مملكة يند دمجفندة وجمعفندة وجمعفندة وجمعفندة  
 مراكز استعادة الموارد وتجميع المعادن



Centre for Environmental Training cet

### Hume, VIC Resource Recovery Centre



Centre for Environmental Training cet

### Green waste drop off

- Kimbriki, Sydney, NSW



Centre for Environmental Training cet

## Popular for compost sales

- Southern landfill, Wellington, NZ



Centre for Environmental Training cet

## Plastic drum separation



Centre for Environmental Training cet

## Silage film baler – Kilmany landfill, Wellington Shire, VIC



Centre for Environmental Training cet

## Illegal dumping outside landfill



Centre for Environmental Training cet

## Dealing with illegal dumping of asbestos

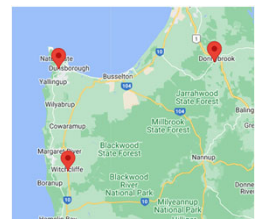


Centre for Environmental Training cet

## Landfills accepting asbestos in Busselton/Margaret River WA

- <https://www.busselton.wa.gov.au/resident/waste-and-recycling/waste-facilities-and-tip-passes.aspx>

- **Dunsborough Waste Facility**
- Vidler Road, Naturaliste, WA, 6281
- (08) 9781 0359
- City of Busselton

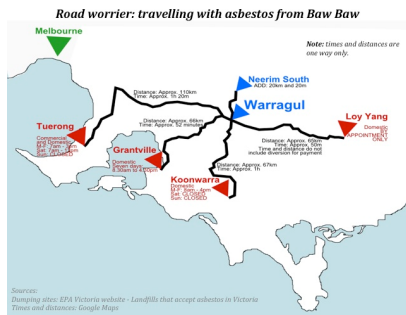


- EPA Victoria have an app which calculates journey time to the nearest landfill accepting asbestos

Centre for Environmental Training cet



## Travel time from Baw Baw to Gippsland landfills accepting asbestos



Centre for Environmental Training cet

## Tyre dumping



Centre for Environmental Training cet

## Tip shop



Centre for Environmental Training cet

## Tip shop

- Reduces waste to landfill, generates revenue
- Interaction with community
- Safety considerations



Centre for Environmental Training cet

## Tip shops – sale of recyclables



Centre for Environmental Training cet

## Tip face supervision



Centre for Environmental Training cet

### Objector – Noosa, QLD Superdump



Centre for Environmental Training cet

### Noosa, QLD Superdump



Centre for Environmental Training cet

### NIMBY - Protesters

- No tip near Arthur's Seat, VIC



Centre for Environmental Training cet

### Objectors – conflicting land use



Centre for Environmental Training cet

### Objectors - landfill odours



Centre for Environmental Training cet

### Security

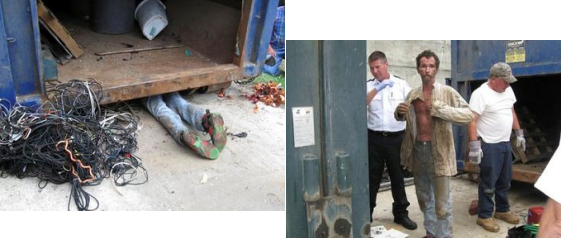
- Fencing, cameras – how adequate are they?



Centre for Environmental Training cet

### Copper thief trapped under skip

- Trapped for 12 hours!
- Dillon landfill, North Carolina, USA



Centre for Environmental Training cet

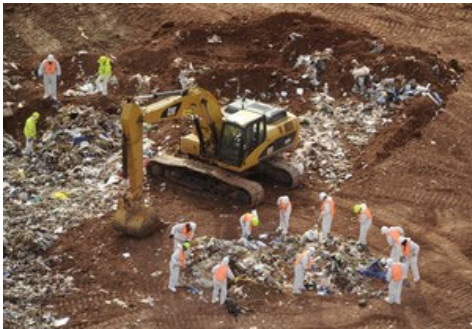
### Unusual waste



Posted 18 Feb 2016, 6:14pm  
Entrance to Newcastle's  
Summerhill Waste Centre,  
where two surgically  
amputated legs were found  
earlier this week.

Centre for Environmental Training cet

### Criminal activity – police search for a body



Centre for Environmental Training cet