

Improved Landfill Management

Landfill Operations

Centre for Environmental Training cet

Transfer station



Centre for Environmental Training cet

Waste handling by loader



Centre for Environmental Training cet

Weighbridge and weather station, Tamworth landfill, NSW



Centre for Environmental Training cet

Gatehouse and weighbridge Summerhill Waste Management Facility



Centre for Environmental Training cet

Weighbridge

- Darling Downs, QLD



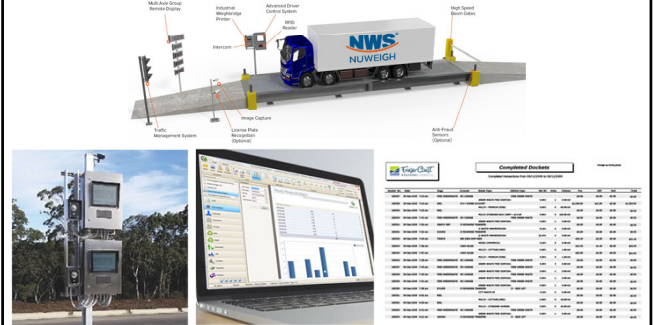
Centre for Environmental Training cet

Landfill recording and reporting software

- Weighbridge and non – weighbridge software for landfills and transfer stations
- Touch screen options for processing transactions
- Interface to payment systems/ EFTPOS integration
- Unmanned operations available linked to vehicle GPS, boom gates, cameras, EID tags etc.
- XLS, PDF and DOC outputs, cloud connection
- Variety of standard reports
- Tracks incoming and outgoing (sales, collections)
- State Government reporting options/customization
- E.g. ClearWeigh, iWEIGH

Centre for Environmental Training 

Weighbridge recording and reporting



Centre for Environmental Training 

Digital load cell weighbridge, Horsham, VIC



Centre for Environmental Training 

Access road - recycled C&D waste



Centre for Environmental Training 

Signage – working face



Centre for Environmental Training 

Tip face supervision



Centre for Environmental Training 

Cosgrove landfill, Greater Shepparton VIC



Centre for Environmental Training cet

Compactor truck tipping at face



Centre for Environmental Training cet

Waste transfer vehicles

- Dedicated hook and lift system at Kate Valley Landfill, Canterbury NZ
- Full containers are brought to the marshalling area and transferred to dedicated vehicles that access the landfill



Centre for Environmental Training cet

Dedicated vehicles only at working face



Centre for Environmental Training cet

Landfill operations – working face

- Compactors working on face



Centre for Environmental Training cet

Landfill operations – small working face

- Dozer pushing waste over edge of face
- How well will the waste be compacted?



Centre for Environmental Training cet

Compactor trucks tipping at face

- Large working face, little evidence of direction
- Hallam Road Landfill Site, VIC



Centre for Environmental Training cet

Operating face – lined cell



Centre for Environmental Training cet

Pushing up to face

- Waste deposited below face
- Bulldozer pushes up to face



Centre for Environmental Training cet

Dozer compactor operating



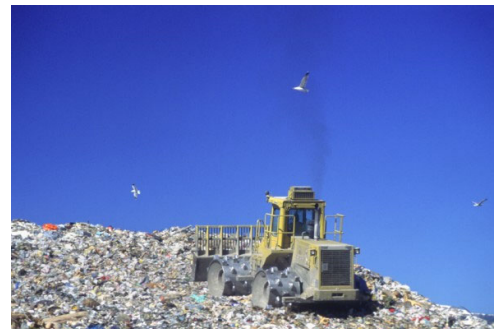
Centre for Environmental Training cet

Landfill compactor operating



Centre for Environmental Training cet

Landfill compactor (sheep's foot) operating



Centre for Environmental Training cet

Compaction challenge

- South Hedland landfill
- Huge stockpiles of tyres
- Non-compliant storage
- ~\$950,000 cost of shredding 3,000 tonnes of tyres and burial with compliant cover (2018)



Centre for Environmental Training cet

Large working face



Centre for Environmental Training cet

Large working face – Rye landfill site



Centre for Environmental Training cet

Working face – compactor and dozer



Centre for Environmental Training cet

Clarinda landfill, Clayton South, VIC – tight working face



Centre for Environmental Training cet

Baled waste



Centre for Environmental Training cet

Baled and wrapped waste



Centre for Environmental Training cet

Bale fill landfill



Centre for Environmental Training cet

IWS Northern bale fill landfill, Adelaide, SA



Centre for Environmental Training cet

Operations – daily cover stockpiles



Centre for Environmental Training cet

Earthen daily cover



Centre for Environmental Training cet

Landfill operations – working face

- Temporary cover – note use of earth and alternative sheet covers on face front



Centre for Environmental Training cet

Degradable film cover – soil anchor



Centre for Environmental Training cet

Landfill mining

- Offers opportunity to increase compaction and recover air space
- Extends site life
- High recovery rate of recyclables possible, especially from older cells filled before recycling was undertaken
- Material generally screened and sometime shredded before placement
- Possible odour issues

Centre for Environmental Training cet

Landfill mining



Centre for Environmental Training cet

Landfill mining – MSW screening to recover daily cover earth



Centre for Environmental Training cet

Unusual or occasional wastes

Campaign wastes:

- Council bulky item collections
- Seasonal agricultural waste (silage bale wrap)
- Batches of “off” or “contaminated” food waste
- Sudden influxes after storms, floods, bushfires – becoming more common with Climate Change
- Interstate waste where levies and charges are significantly different

Centre for Environmental Training cet

Problem wastes - mattresses



Centre for Environmental Training cet

Food waste dumping at landfill



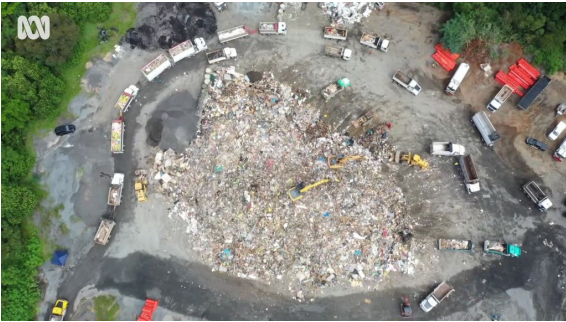
Centre for Environmental Training cet

Food waste tipping – peanut butter contamination scare



Centre for Environmental Training cet

Temporary flood waste landfill, Lismore NSW



Centre for Environmental Training cet

NSW Bushfire waste, Bega Valley landfill



Centre for Environmental Training cet

Cross border waste

- Wattle Glen landfill, QLD
- NSW waste taken to QLD to avoid levy



Centre for Environmental Training cet

Accuweigh landfill tyre wash installation



Centre for Environmental Training cet

Landfill tyre wash



Centre for Environmental Training 

